

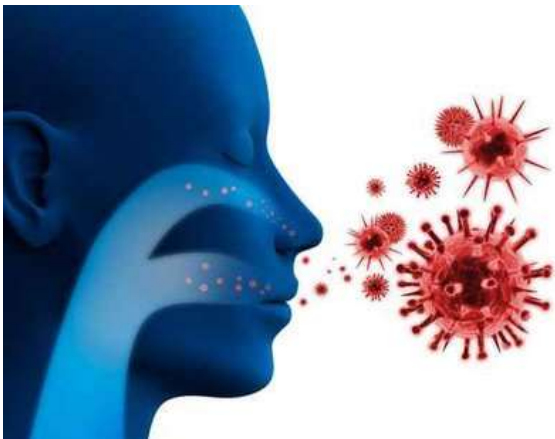


# RSV rapid test: To use or not to use (Cons)

PIDST Meeting 2016

พ.ญ.อรุณี กลิ่นกล่อม กุมารแพทย์โรคติดเชื้อ

โรงพยาบาลสุราษฎร์ธานี





# How to Make a Decision?



**Every day we have decisions to make:  
what to wear, what to eat.**



**Some decisions are no-brainers.**

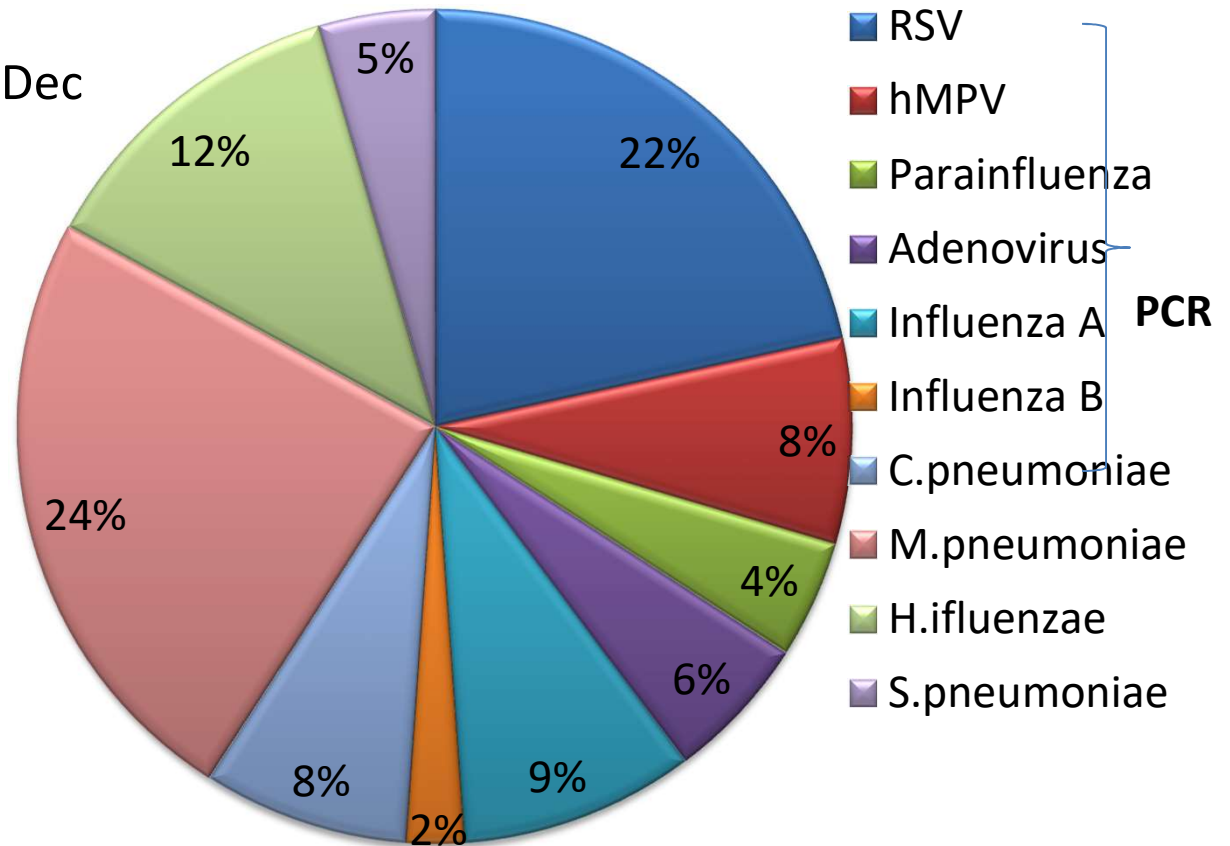
RSV rapid test: To use or not to use (Con)



## Severe Pneumonia in Children under 5 years Suratthani Hospital 2015



289 case of severe pneumonia  
88 organisms in 80 cases  
90% of RSV pneumonia in Oct-Dec



**RSV** ไม่มีวัคซีนและยังไม่มีการรักษาเฉพาะ

ต่างจาก **Influenza virus** การใช้ **Rapid Ag Test** เพื่อการตัดสินใจรักษาและมีวัคซีน



## Expected benefit of Rapid RSV Testing on Clinical Practice



Eliminating the necessity of additional investigations (H/C,U/C)

Rapid identification of RSV decrease unnecessary antibiotic use

Early implementation of infection control measures: cohort or isolation RSV-positive pts

Decrease the duration of hospital stay

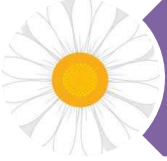
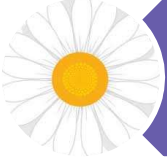

RSV rapid test: To use or not to use (Con)



# RSV rapid test

## Evaluate the Pros and the Cons.



-  Sensitivity and specificity
-  False positive and false negative
-  The best timing of the test
-  Change in clinical practice
-  Cost

RSV rapid test: To use or not to use (Con)