



Diagnostic Tests Galactomannan

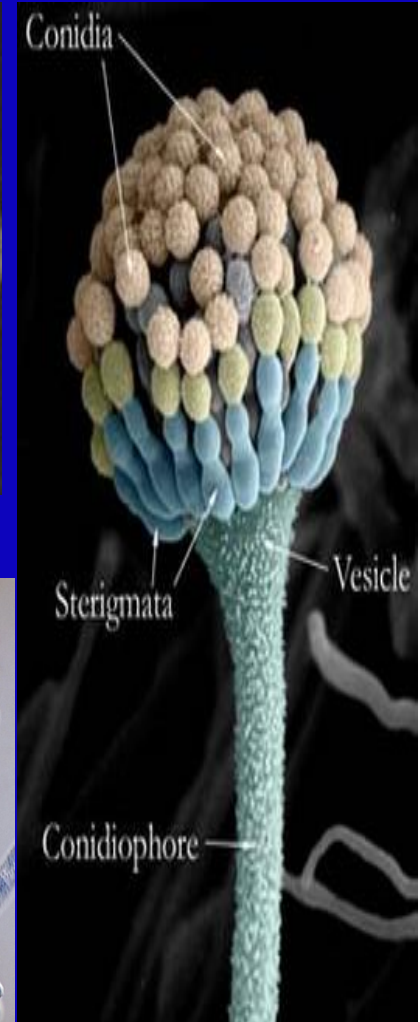
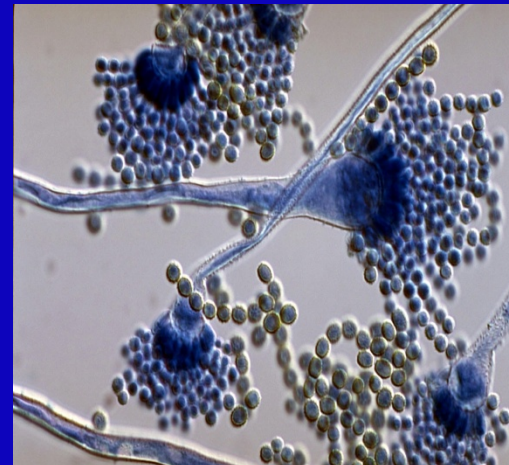
พญ. พรอำภา บรรจงมณี
ภาควิชากุมารเวชศาสตร์
คณะแพทยศาสตร์
มหาวิทยาลัยธรรมศาสตร์

TOPICS

- Acute phase reactants
- Non structural protein 1 (NS1) for dengue
- **Galactomannan**
- *Clostridium difficile* toxin

Galactomannan

- *Aspergillus* species
- Life-threatening dis.
- Prolonged neutropenia
- Advanced HIV inf.
- Inherited immunodeficiency
- HSCT
- Lung transplantation



Galactomannan

- **Spectrum of disease**

- : Allergic disease

- asthma

- ABPA

- allergic sinusitis

- : Local saprophytic disease

- mycelial balls

- : Invasive sinopulmonary aspergillosis
and disseminated disease

Galactomannan

- **Definition for invasive fungal infection (EORTC/MSG)**
- Host factors
- Clinical features
- Mycological evidence
- Three levels of invasive aspergillosis (IA)
 - : proven
 - : probable
 - : possible