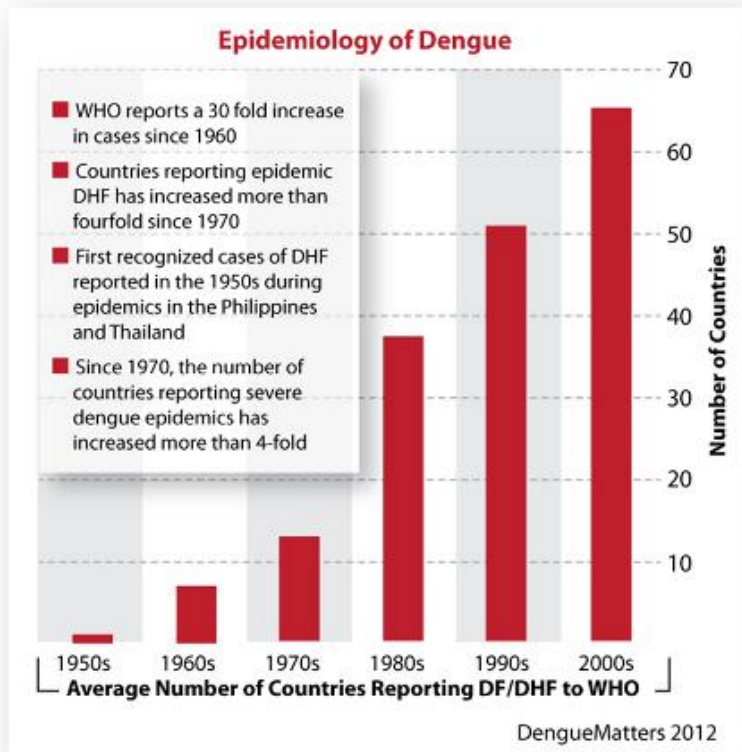


# Community participation in Dengue prevention and control

**Anuttarasakdi Ratchatatat M.D.**

# Global Situation



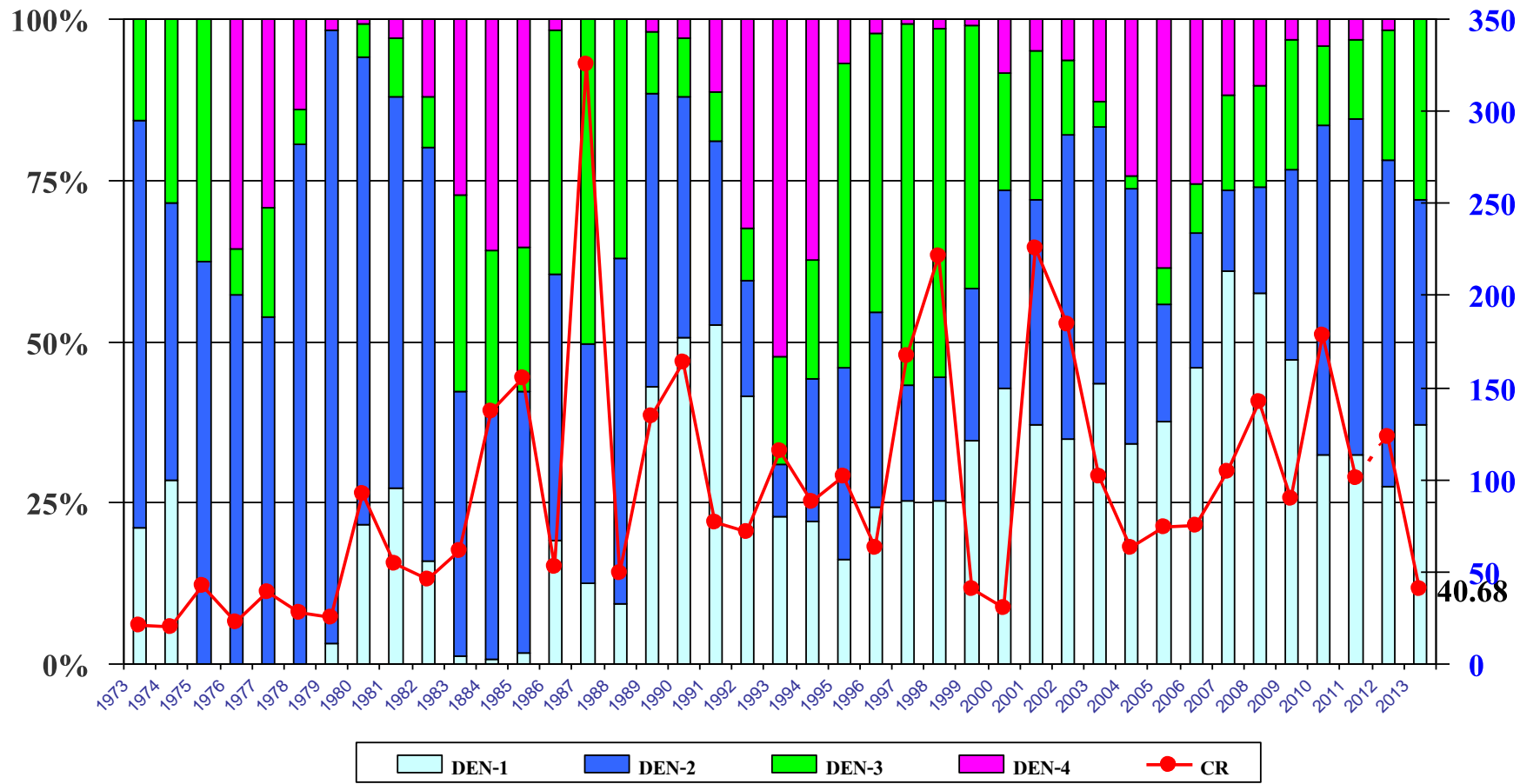
- 1.3 billion people in risk area
- 30 fold rise since 1960
- 4 fold rising in epidemic countries since 1970, more than 100 countries now.

# History of Dengue in Thailand

- First sporadic case in 1949
- First outbreak occurred in 1958 in Bangkok with 2,706 cases (Morbidity 10.6 per 100,000 population) and 296 death (CFR 10.9%).
- The main vector is *Aedes aegypti*
- DEN1, DEN2, DEN3, DEN4 serotypes are found.



# Incidence rate and proportion of dengue Serotype 1973-2013

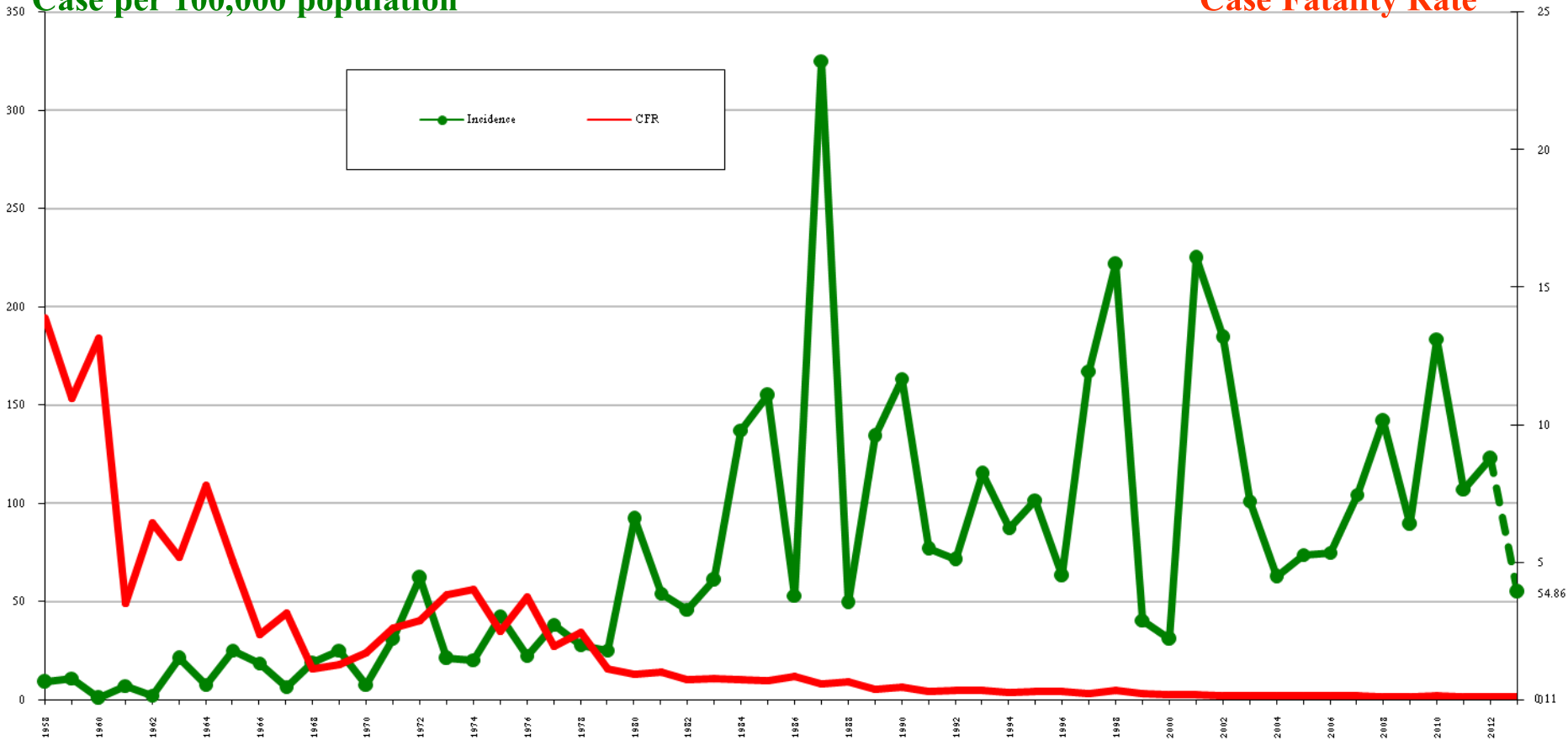


Source: National Institute of Health, Department of Medical Science MOPH Thailand  
 Bureau of Epidemiology, Department of Disease Control MOPH Thailand

# Morbidity and Case Fatality Rate 1958-2013

Case per 100,000 population

Case Fatality Rate



Source: Bureau of Epidemiology, as 28 May 2013

Year